

NETWORK SETUP MANUAL

| Version 2.0 |



Table of Contents

1. Caution for Safety

1.1. General

1.2. Installation and maintenance

2. Recommended PC specifications

3. Network Setup

3.1. IP settings

3.2. Advanced settings

3.3. Allowing Apps in Firewall

1. Caution

1.1. General



CAUTION

- Do not drop, disassemble, attempt to repair, or make any alterations to the device. These actions can cause serious damage to the Launch Monitor's electronics and could also result in an electric shock, which could harm both the device and the user.
- Do not let children touch the device without supervision.
- If liquid, such as water, drinks, or chemicals, enters the device, stop using it immediately and contact the nearest dealer or manufacturer for technical assistance.
- Do not touch the device with wet hands. Doing so may cause an electric shock.
- Make sure that the temperature of the camera does not exceed 0°C to 40°C or 32°F to 104°F. Otherwise, the device may be damaged by extreme temperatures.

1.2. Installation and maintenance



CAUTION

- Do not install in dusty or dirty areas - or near an air conditioner or heater to reduce the risk of damage to the device.
- Avoid installing and operating in an extreme environment where vibration, heat, humidity, dust, strong magnetic fields, explosive/corrosive mists or gases are present.
- Do not apply excessive vibration and shock to the device. This may damage the device.
- Do not use solvents or thinners to clean the surface of the device. This can damage the surface finish.
- Do not put heavy objects on, or hang from, the product. If the product collapses or is dropped, you may be injured.
- Do not install this product on a wall if it could be exposed to oil or oil mist. This may damage the product and cause it to fall.
- Safely install the product in a place that can hold the weight of the product. A lack of strength may cause the product to fall.

2. Recommended PC specifications

If the performance of the PC or NIC does not meet the recommended specifications, the performance of the camera may be affected.

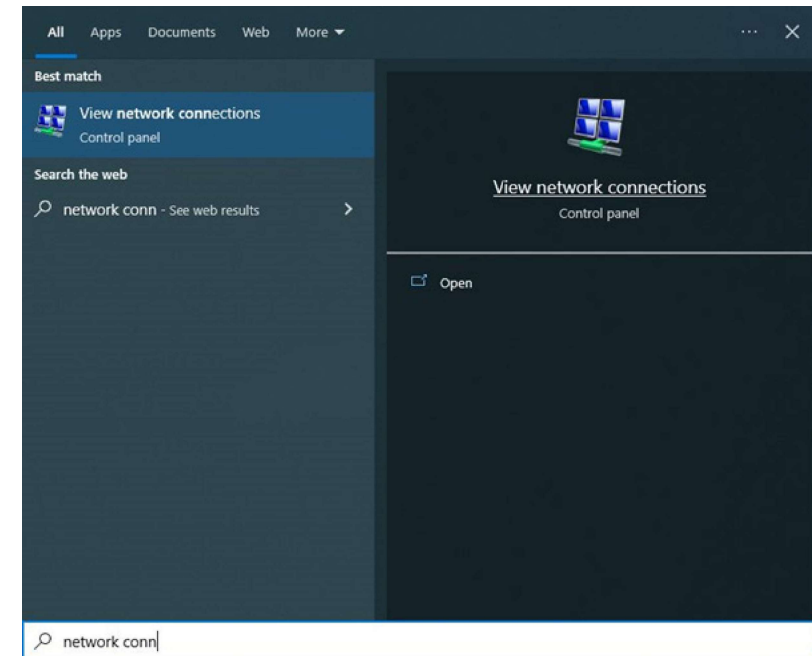
Operating System	Windows 10 (x64)
CPU	Dual Core 3.0GHz or higher (Over then Intel Core i5 or AMD Ryzen3 recommended)
RAM	16GB or higher
HDD Free Space	10GB or higher
Gigabit Ethernet Interface	for Chipset <ul style="list-style-type: none"> • Intel Pro/1000 class Chipset recommended • A NIC that supports Jumbo Packet recommended • NIC with 2048 or higher Receive Descriptors recommended for NIC Card <ul style="list-style-type: none"> • Recommended NIC Card: EXP19301CT (1Ch Intel NIC Card)

3. Network Setup

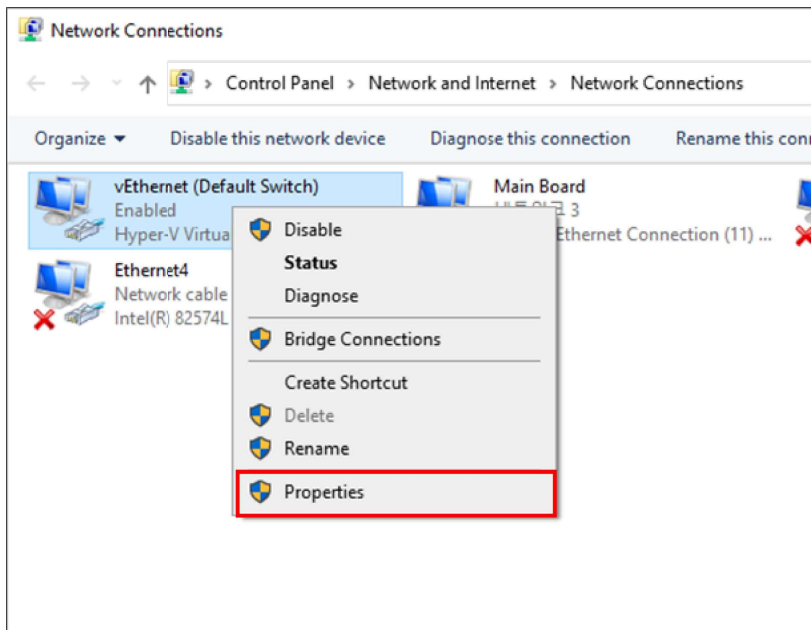
Note Make sure you finish the Installation before you start the Network Setup.
IP and advanced settings are required to communicate with the Launch Monitor.

3.1. IP settings

1. Search for “View network connections” in Windows.

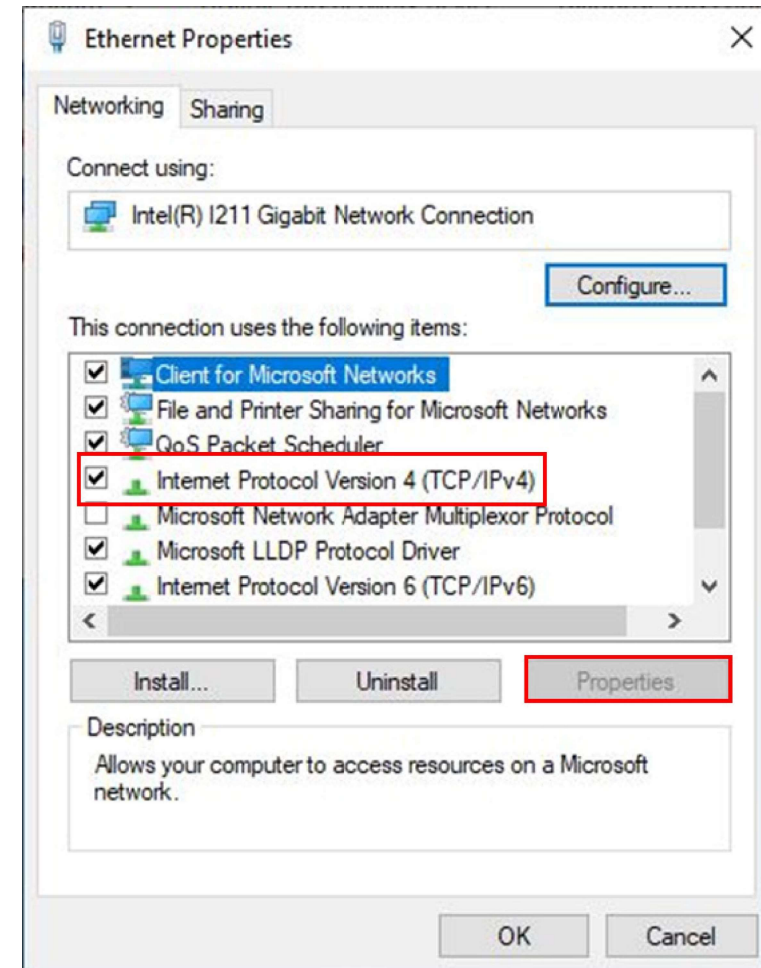


2. Click on "Properties" of the Ethernet which is connected to the Launch Monitor.



3. Select "Internet Protocol Version 4 (TCP/IPv4)".

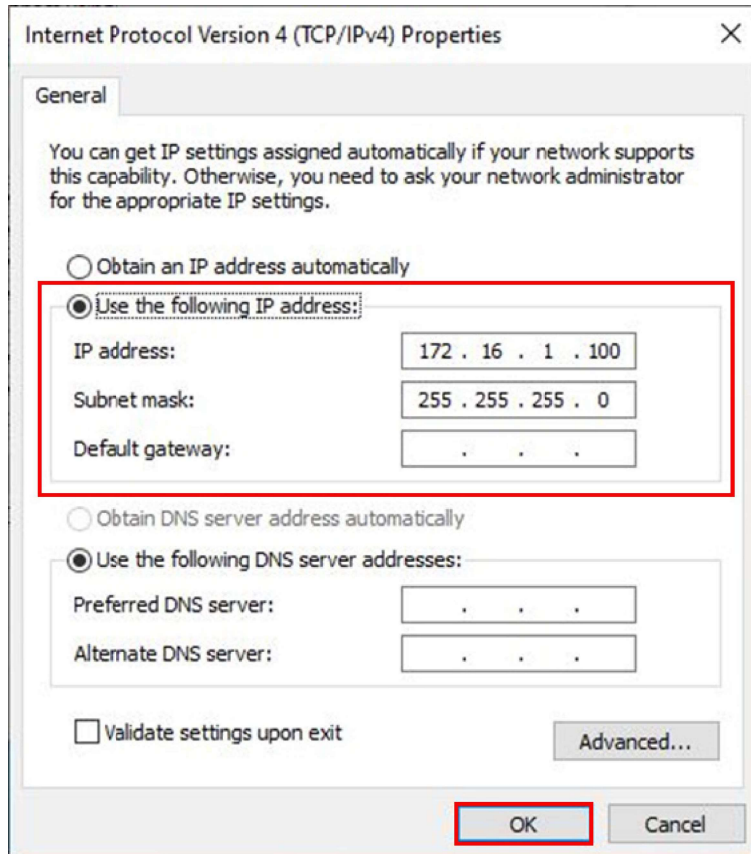
4. Click on "Properties".



5. Set the IP address and subnet mask manually.

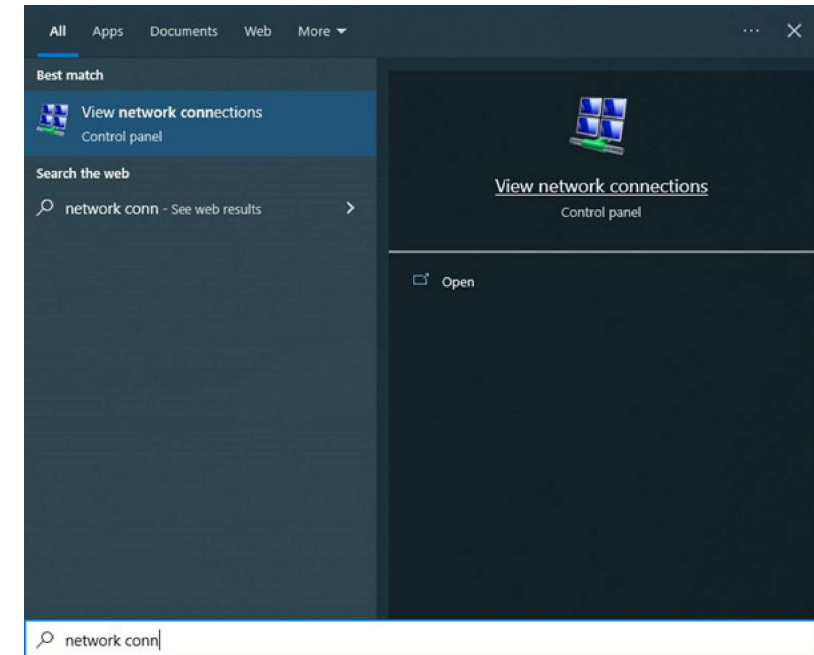
- IP Address: (Right-handed) 172.16.1.100 / (Left-handed) 172.16.0.100
- Subnet mask: 255.255.255.0

Click on "OK".

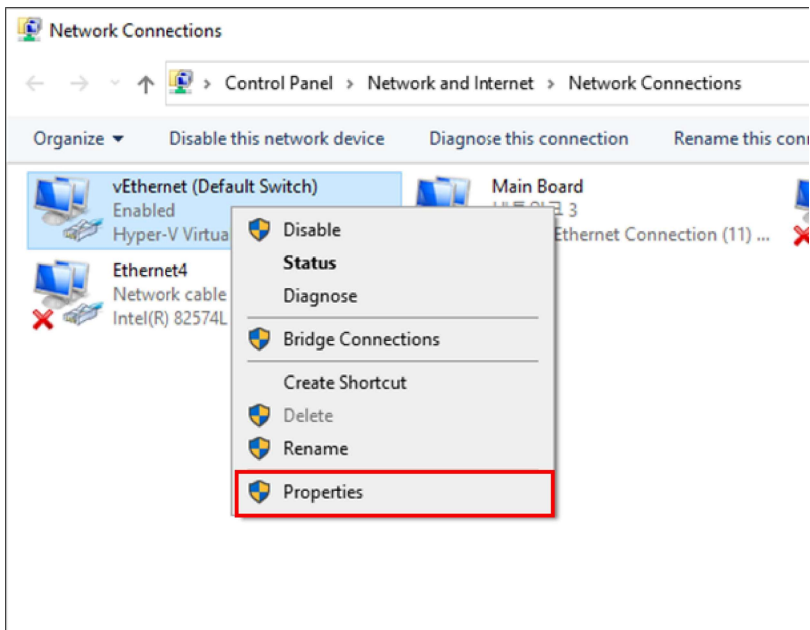


3.2. Advanced settings

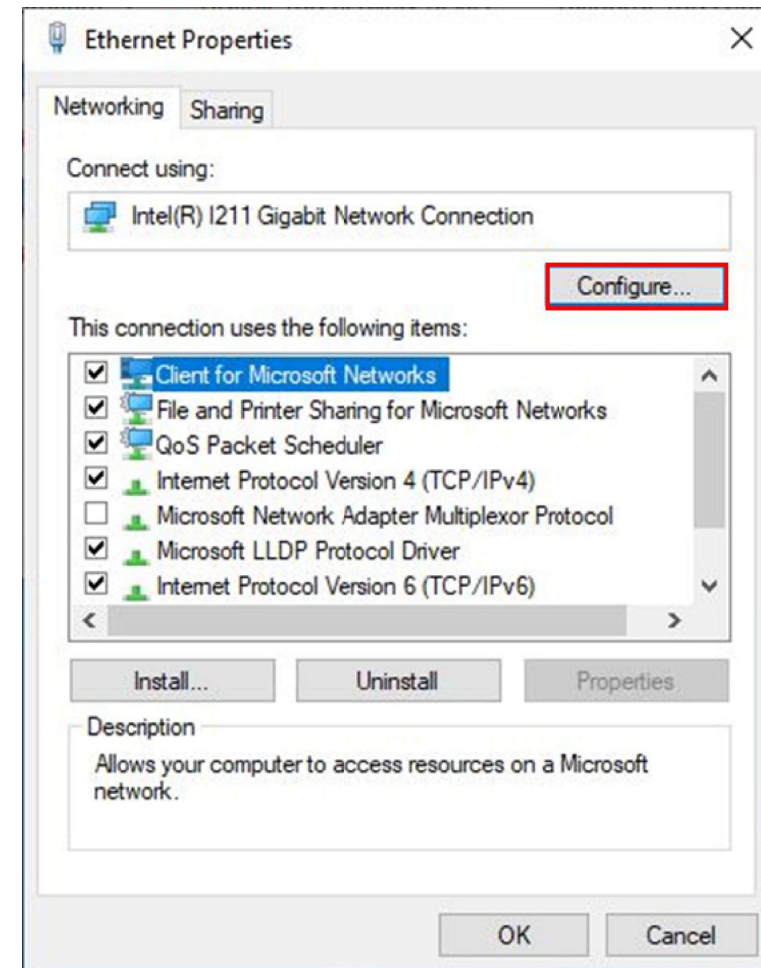
1. Search for "View network connections" in Windows.



2. Click on "Properties" of the Ethernet which is connected to the Launch Monitor.



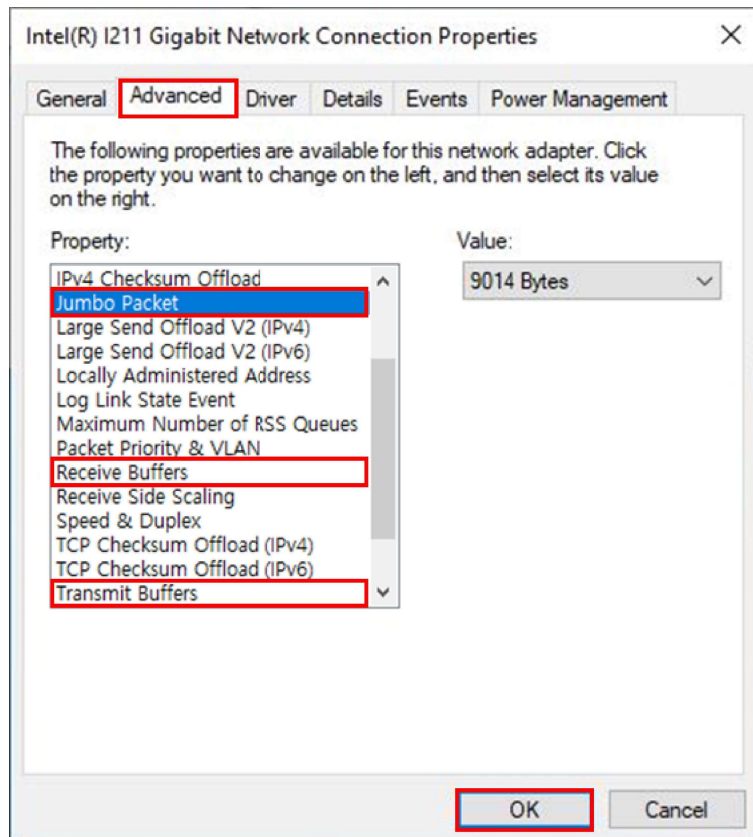
3. Click on "Configure".



4. In the advanced settings, change the 3 values as shown below.

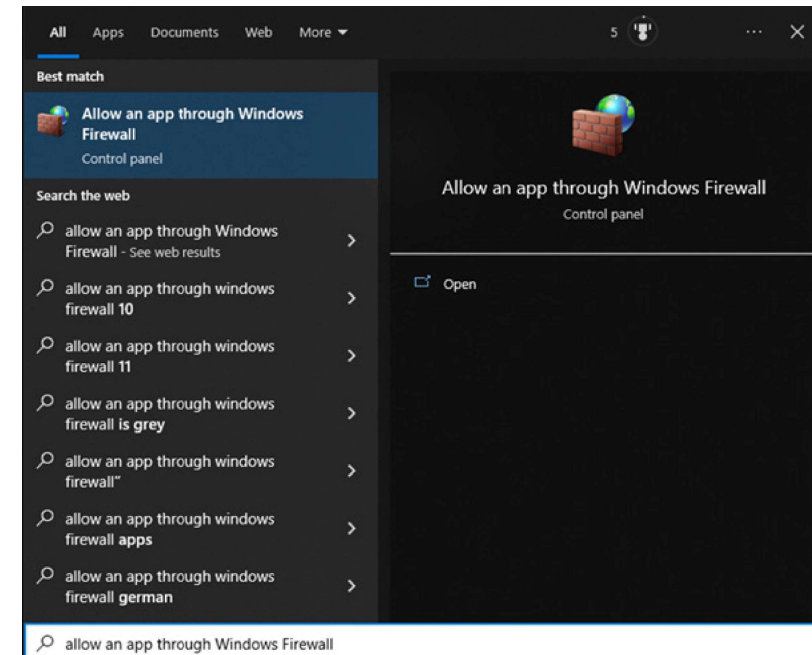
- Jumbo packet: 9014 Bytes
- Receive buffers: Maximum
- Transmit buffers: Maximum

Click on "OK".

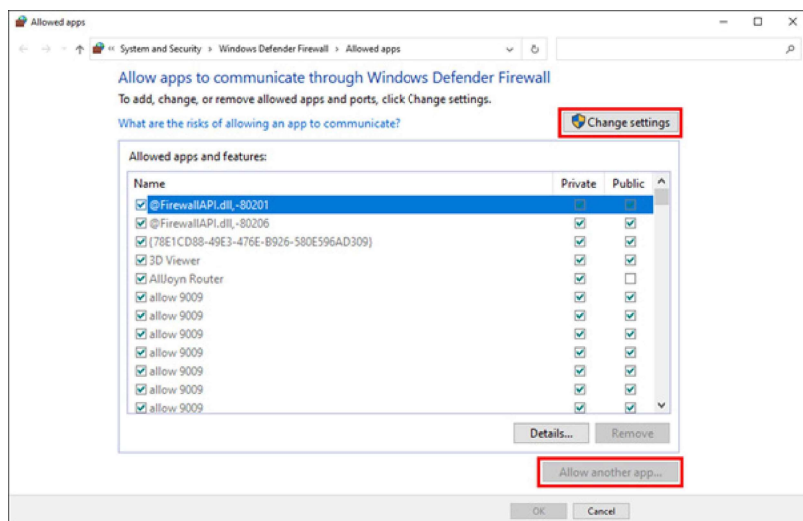


3.3. Allowing Apps in Firewall

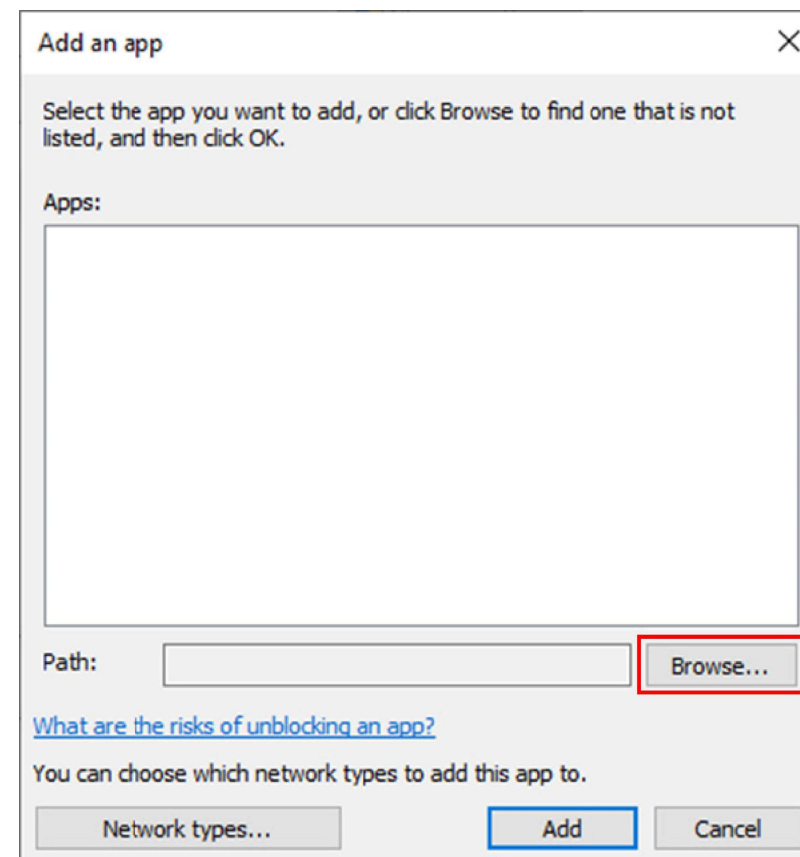
1. Search for "allow an app through Windows firewall" in Windows.



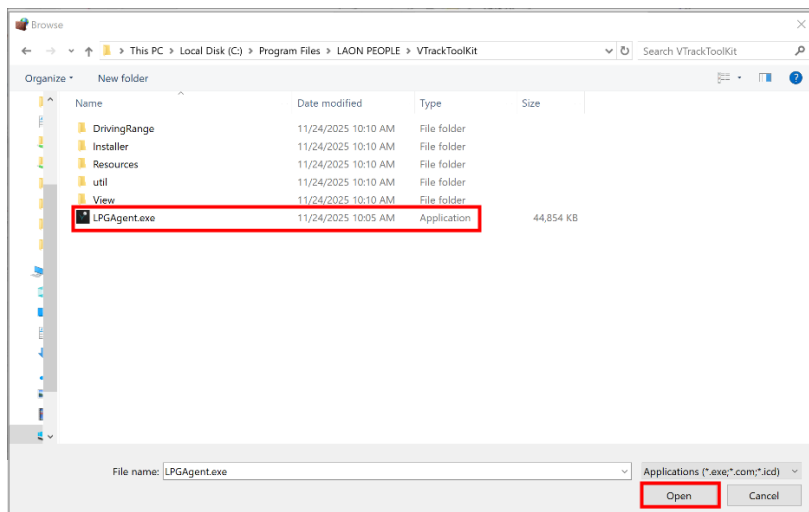
2. Click [Change settings].
3. Click [Allow another app].



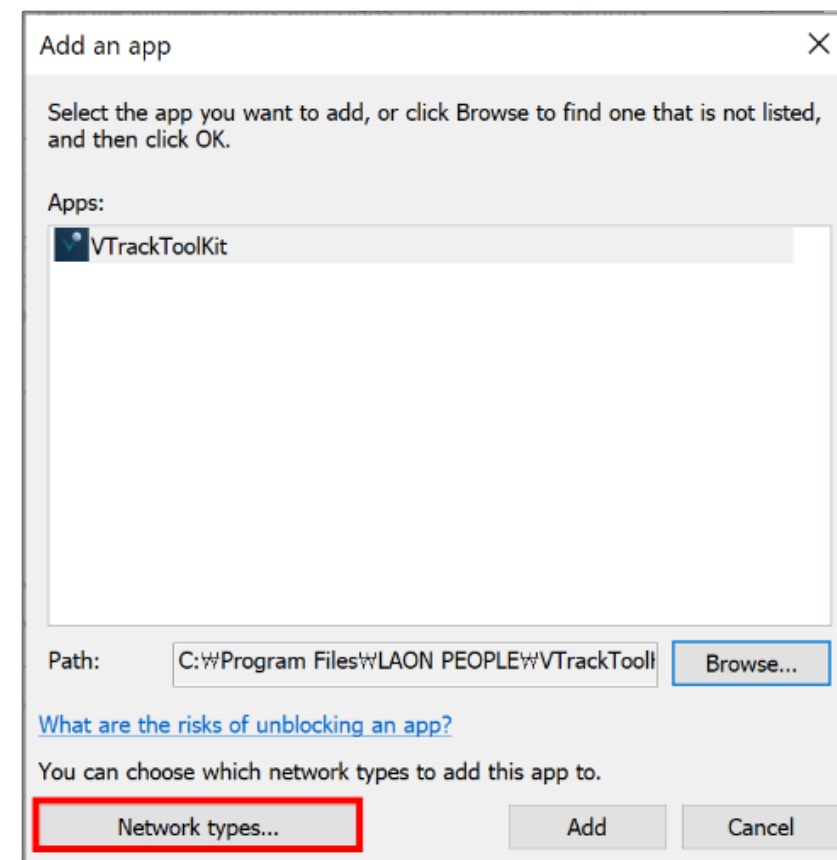
4. [Add an app] pop-up window will appear.
5. Click [Browse. . .].



6. Select LPGAgent.exe.
7. Click [Open].

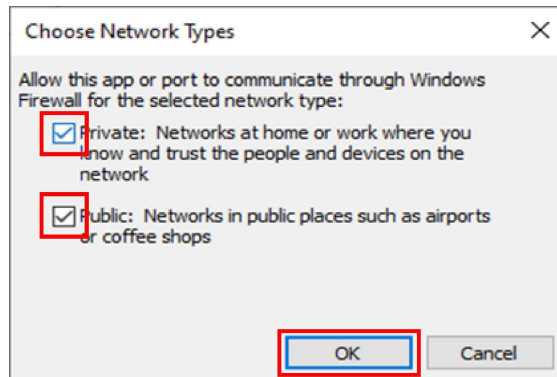


8. Click [Network types].

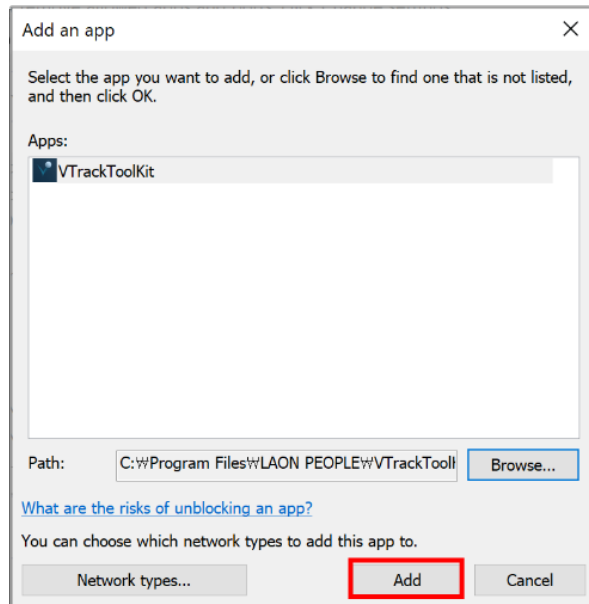


9. Check [Private] and [Public].

10. Click [OK].



11. Click [Add].



12. Click [OK].

